



# Fitting Series

## Minimal Fitting Series

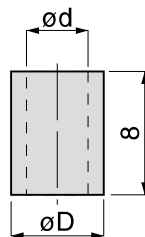
FITTING

**LS**

### Tube Clamp Sleeve

**CAD**

RoHS compliant



Unit : mm

Model code	Tube O.D.	øD	ød	Weight (g)	CAD file name
LS-0425□	4	6	4	0.3	TFMF-002
LS-0640□	6	8	6	0.4	

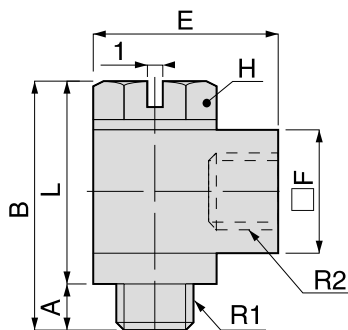
※ . □ in Model code / Replaced with "C" for Clean-room package

**LH**

### Female Screw Banjo

**CAD**

RoHS compliant



Unit : mm

Model code	R1	R2	A	B	L	E	Hex. H	□ F	Weight (g)	Orifice dia.	Effective area (mm <sup>2</sup> )	CAD file name
LH-FM3-M3□	M3×0.5	M3×0.5	2.2	11.5	9.3	8.7	5.5	5.5	2.2	1.0	0.5	—
LH-FM5-M5□	M5×0.8	M5×0.8	3.2	16	12.8	12	7	8	6.5	1.8	1.5	TFMF-002

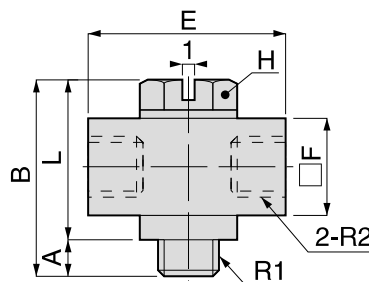
※ . □ in Model code / Replaced with "C" for Clean-room package

**LB**

### Female Screw Banjo Tee

**CAD**

RoHS compliant



Unit : mm

Model code	R1	R2	A	B	L	E	Hex. H	□ F	Weight (g)	Orifice dia.	Effective area (mm <sup>2</sup> )	CAD file name
LB-FM3-M3□	M3×0.5	M3×0.5	2.2	11.5	9.3	11	5.5	5.5	2.7	1.0	0.5	—
LB-FM5-M5□	M5×0.8	M5×0.8	3.2	16	12.8	16	7	8	6.5	1.8	1.5	TFMF-002

※ . □ in Model code / Replaced with "C" for Clean-room package

**CAD**

CAD data is available at PISCO website.

273

Standard Series

Mini Series

Stainless Series

Chemical Series

PP Series

EG Series

Anti-static & Brass Series

Die Temperature Control

Minimal Series