

Connector



How to Order?

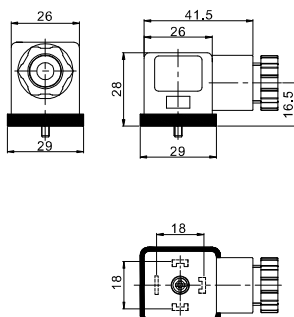
Series No.	Power type	Voltage	Cover Color	Logo	LED Lamp	Protective Device
DA: DIN43650 A type(ISO4400) DB: B type(Industrial) DC: C type(Industrial) DBK: B Type(water-proof industrial) DBM: B Type(M8 connector)	A: AC D: DC Not available for DBK/DBM	1: 12V-48V 2: 110V-220V 3: 380V	Blank: Brown translucent J: Colorless transparent B: Black non-transparent Note:DBK/DBM is Black non-transparent only	Blank: Without "EMC" logo E: With "EMC" logo Note: *Available for customer's logo. *DBM is not available for EMC logo.	Blank: Without LED lamp L: With LED lamp Note: DC current is with colorless and transparent lamp, with red light when power on. If wrong wiring with green light. AC current is with red lamp and with red light if be power on.	Blank: None R: Varistor D:Diode
Note: All include rubber seal. Note: *Only applicable to LED lamp *Only applicable to DA type *DBM is applicable to 12V-48V only						

Order Example:

Industrial B type, AC220V, Brown translucent cover, with "EMC" logo and LED lamp, with Piezoresistor, the model No. is: DB-A2ELR

Main Dimension

DA

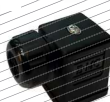


43650A Connector

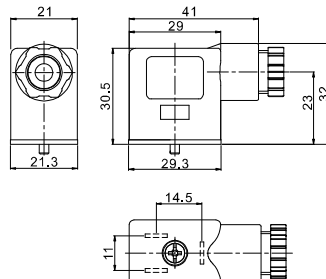
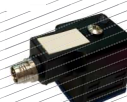
DB



DBK

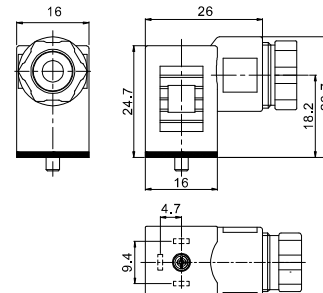


DBM



43650B Connector

DC



43650C Connector