

# Fitting Series

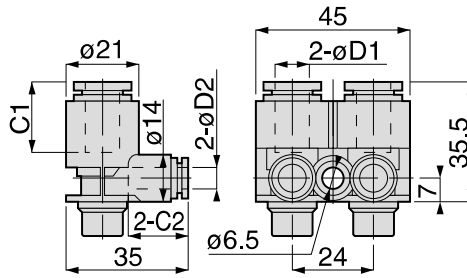
## 2-Circuit Junction Block

FITTING

### MA 106 series (Fixed type)

#### MA 106 Inlet port

RoHS compliant

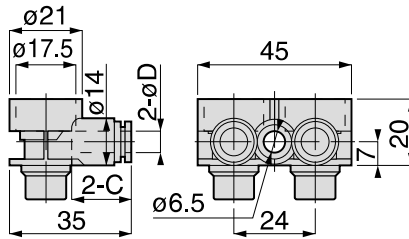


Unit : mm

Model code	Tube O.D. $\phi D1$	Tube O.D. $\phi D2$	Tube end C1	Tube end C2	Weight (g)	Orifice dia.	CAD file name
MA106-1006A	10	6	20.5	17	36.5	4.6	MA106-1006A
MA106-1008A		8		18.5	37	6	MA106-1008A
MA106-1206A	12	6	23.5	17	38.5	4.6	MA106-1206A
MA106-1208A		8		18.5	39	6	MA106-1208A

#### MA 106 Middle outlet port

RoHS compliant

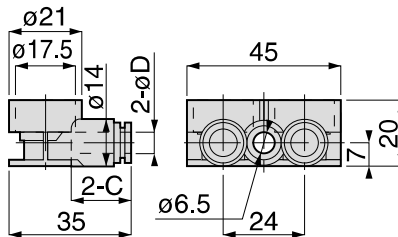


Unit : mm

Model code	Tube O.D. $\phi D$	Tube end C	Weight (g)	Orifice dia.	CAD file name
MA106-06B	6	17	24.5	4.6	MA106-06B
MA106-08B	8	18.5	25.5	6	MA106-08B

#### MA 106 End outlet port

RoHS compliant



Unit : mm

Model code	Tube O.D. $\phi D$	Tube end C	Weight (g)	Orifice dia.	CAD file name
MA106-06C	6	17	22.5	4.6	MA106-06C
MA106-08C	8	18.5	23.5	6	MA106-08C

331

Standard Series

Mini Series

Stainless Series

Chemical Series

PP Series

EG Series

Anti-sweater & Brass Series

Die Temperature Control

Minimal Series

Stop Fitting Series

Rotary Series

Twist-Proof Fitting

Block and Connector



3D CAD data is available at PISCO website.



CAD data is available at PISCO website.