



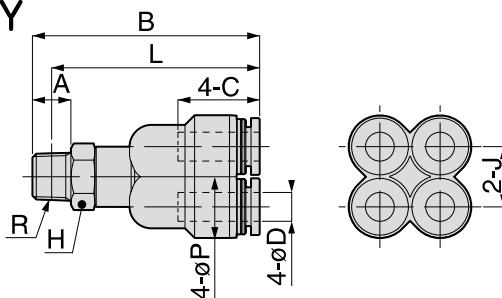
Tube Fitting

FITTING

PRX

Double Branch Y

RoHS compliant



OP.
P.754

3D
CAD

CAD

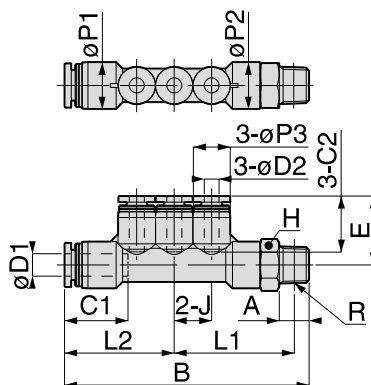
Unit : mm

Model code	Tube O.D. øD	R	A	B	L	øP	Tube end C	J	Hex. H	Orifice bore (ømm)	Weight (g)	CAD file name
PRX4-01 ④	4	R1/8	8	38.9	34.9	10.5	14.9	10.3	12	2.6	16	PRX4-01_
PRX4-02 ④		R1/4	11	42.4	36.4				14		21	PRX4-02_
PRX6-01 ④	6	R1/8	8	47.2	43.2	13	17	12.5	12	5.2	25	PRX6-01_

PKD

Triple Run Tee

RoHS compliant



OP.
P.754

3D
CAD

CAD

Unit : mm

Model code	Tube O.D. øD1	Tube O.D. øD2	R	A	B	E	L1	L2	J	øP1	øP2	øP3	Tube end C1	Tube end C2	Hex. H	Orifice bore (ømm)	Weight (g)	CAD file name
PKD6-4-01 ④	6	4	R1/8	8	65.4	18.4	32.1	29.3	10	12.5	12.5	10	17	14.9	12	3	21	PKD6-4-01_
PKD8-4-02 ④	8	4	R1/4	11	69.2	19.2	32	31.2	10	14.5	14.5	10	18.1	14.9	14	3	28	PKD8-4-02_
PKD8-6-02 ④		6			76.9	21.3	36.5	34.4	12.5			12.5		17		4.6	35	PKD8-6-02_
PKD10-8-03 ④	10	8	R3/8	12	87.8	23.7	41.5	40	14.5	17.5	18	14.5	20.2	18.1	17	6.7	50	PKD10-8-03_

Common caution in this page

※ 1. ④ in Model code / Replaced with "W" for Light-gray color, "-C" for Clean-room package, "W-C" for Light-gray color and Clean-room package, "-UC" for Clean-wash and Clean-room package

※ 2. "L" and "L1" are reference values for height dimensions after tightening thread.

※ 3. Orifice bore is the smallest passage converted in terms of the diameter.