

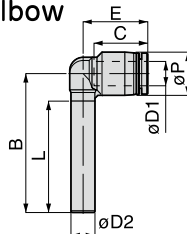
## Fitting Series

### Tube Fitting

FITTING

#### PLL<sup>®</sup>GJ Unequal Plug-in Long Elbow

RoHS compliant



OP P.754 3D CAD

Unit : mm

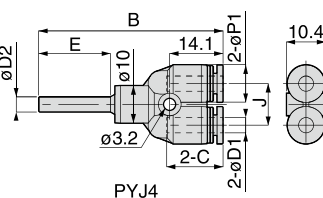
Model code	Tube O.D. øD1	Tube dia. øD2	B	L	øP	Tube end C	E	Orifice bore (ømm)	Weight (g)	CAD file name
PLLGJ6-4 ④	4	6	42	34.5	12.5	14.9	17.7	3.2	3.9	PLLGJ6-4

83

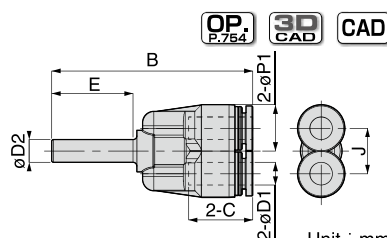
Standard  
Series

#### PY<sup>®</sup>J Plug-in Y

RoHS compliant



PYJ4



Unit : mm

Model code	Tube O.D. øD1	Tube dia. øD2	B	øP1	Tube end C	E	J	Orifice bore (ømm)	Weight (g)	CAD file name
PYJ4 ④	4	4	48.7	10	14.9	19	11	2.5	6.5	PYJ4
PYJ6 ④	6	6	53.2	12.5	17	21.5	12	3.9	8.5	PYJ6
PYJ8 ④	8	8	56.1	14.5	18.1	22.5	14	5.9	13	PYJ8
PYJ10 ④	10	10	63.2	17.5	20.2	24	18	7.4	21	PYJ10
PYJ12 ④	12	12	71.3	21	23.4	28	20	8.9	31	PYJ12
PYJ16 ④	16	16	82.6	25	24.1	30	24	12.9	41	PYJ16
PYJ1/4 ④	1/4	1/4	53.2	12.5	17	21.5	12	3.9	8.6	PYJ1_4
PYJ5/16 ④	5/16	5/16	56.1	14.5	18.1	22.5	14	5.9	13	PYJ5_16
PYJ3/8 ④	3/8	3/8	63.2	17.5	20.2	24	18	7.4	21	PYJ3_8
PYJ1/2 ④	1/2	1/2	71.6	21	23.7	28	20	8.9	30	PYJ1_2

Common caution in this page

※ 1. ④ in Model code / Replaced with "W" for Light-gray color, "-C" for Clean-room package, "W-C" for Light-gray color and Clean-room package, "-UC" for Clean-wash and Clean-room package

※ 2. Orifice bore is the smallest passage converted in terms of the diameter.

OP P.000

Page for special specifications

3D CAD

3D CAD data is available at PISCO website.

CAD

CAD data is available at PISCO website.