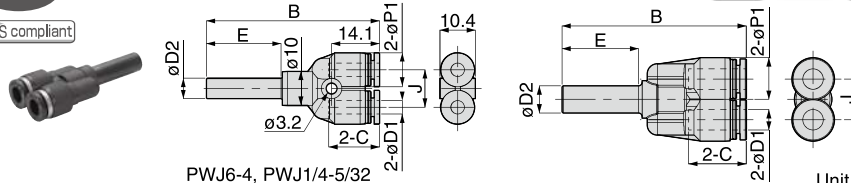


PWJ Unequal Plug-in Y

RoHS compliant



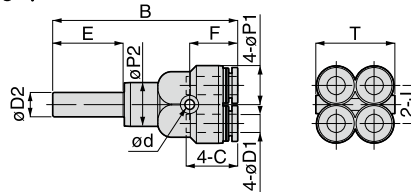
PWJ6-4, PWJ1/4-5/32

Unit : mm

Model code	Tube O.D. øD1	Tube dia. øD2	B	øP1	Tube end C	E	J	Orifice bore (ømm)	Weight (g)	CAD file name
PWJ6-4④	4	6	50.9	10	14.9	22	11	2.6	6.8	PWJ6-4
PWJ8-6④	6	8	54.2	12.5	17	22.5	12	5.3	8.8	PWJ8-6
PWJ10-8④	8	10	57.6	14.5	18.1	24	14	5.9	13	PWJ10-8
PWJ12-10④	10	12	67.2	17.5	20.2	28	18	7.4	22	PWJ12-10
PWJ16-12④	12	16	73.3	21	23.4	30	20	8.9	32	PWJ16-12
PWJ1/4-5/32④	5/32	1/4	50.9	10	14.9	22.3	11	2.6	6.8	PWJ1_4-5_32
PWJ5/16-1/4④	1/4	5/16	54.2	12.5	17	22.5	12	5.3	8.7	PWJ5_16-1_4
PWJ3/8-5/16④	5/16	3/8	57.6	14.5	18.1	24	14	5.9	13	PWJ3_8-5_16
PWJ1/2-3/8④	3/8	1/2	67.2	17.5	20.2	28	18	7.4	22	PWJ1_2-3_8

PRJ Plug-in Double Y

RoHS compliant



Unit : mm

Model code	Tube O.D. øD1	Tube dia. øD2	B	E	J	øP1	øP2	Tube end C	ød	F	T	Orifice bore (ømm)	Weight (g)	CAD file name
PRJ6-4④	4	6	55	22	10.3	10.5	12.5	14.9	3.2	14.2	21.3	3.2	13	PRJ6-4_
PRJ8-6④	6	8	60.8	23.2	12.5	13	14.5	17	3.2	15.8	26	4.6	19	PRJ8-6_

Common caution in this page

- * 1. ④ in Model code / Replaced with "W" for Light-gray color, "-C" for Clean-room package, "W-C" for Light-gray color and Clean-room package, "-UC" for Clean-wash and Clean-room package
- * 2. Orifice bore is the smallest passage converted in terms of the diameter.